

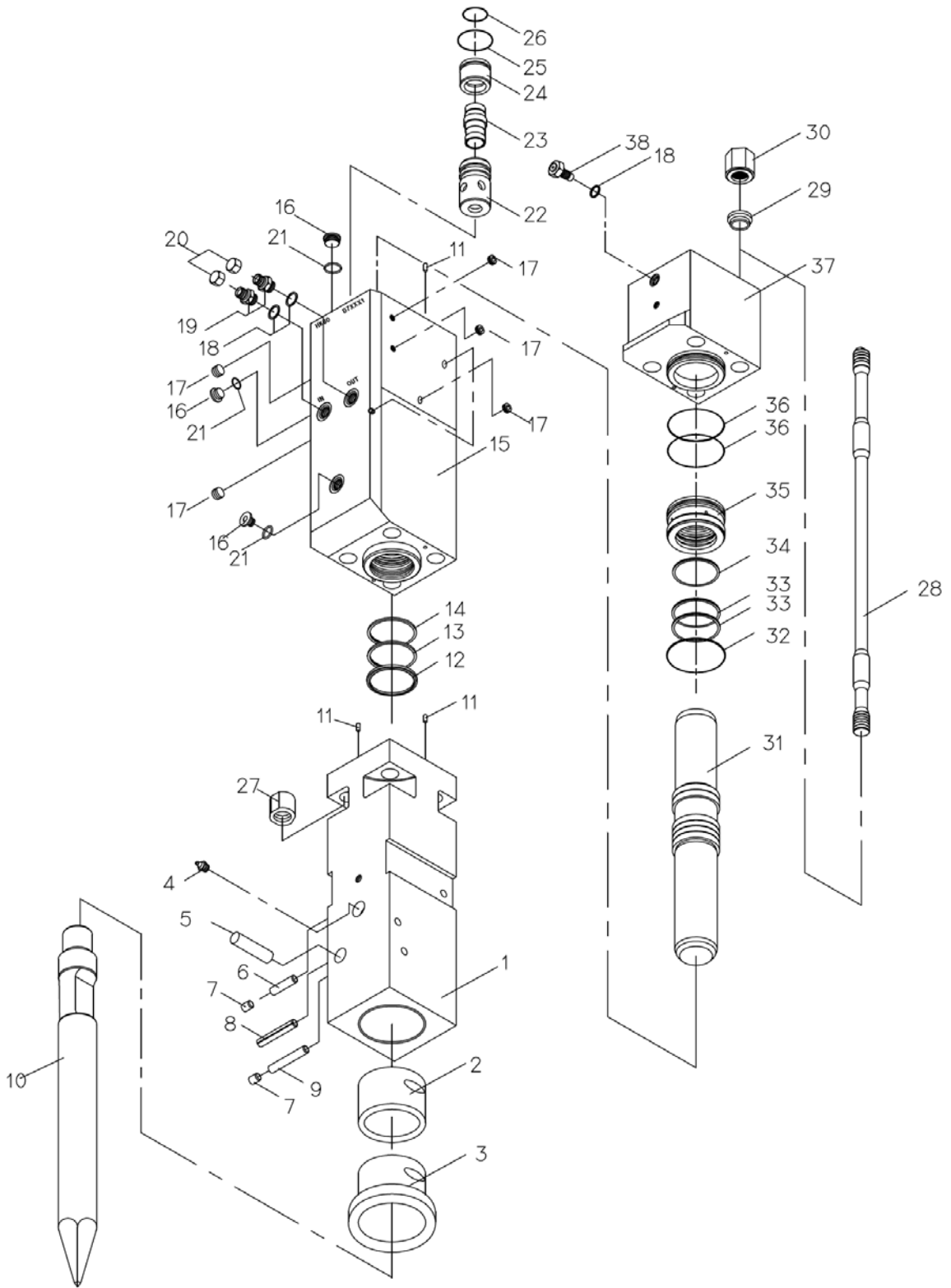


# BHI HydroRam Hydraulic Hammer

## HK45 Parts List

### ■ HK45 POWER CELL PART LIST

## HK45 POWER CELL



## ■ HK45 POWER CELL PART LIST

No.	Part No.	Part Name	Q'ty	No.	Part No.	Part Name	Q'ty
0	D5000000	POWER CELL ASSEMBLY	1	23	D5000240	MAIN VALVE	1
1	D5000130	TOOL HOLDER	1	24	D5000220	MAIN VALVE CAP	1
2	D5000140	ROUND BUSHING	1	25	22402300	O-RING	1
3	D5000120	TOOL HOLDER BUSHING	1	26	22401330	O-RING	1
4	13007810	GREASE NIPPLE	1	27	D5000160	BOTTOM NUT	4
5	D5000250	RETAINER PIN	1	28	D5000170	TENSION BOLT	4
6	D5000300	STOP PIN(B)	1	29	D5000190	TOP NUT WASHER	4
7	13007320	RUBBER PLUG	2	30	D4000200	TOP NUT	4
8	D4000260	SPRING PIN	1	31	D5000380	PISTON	1
9	D5000260	STOP PIN(A)	1	32	22401460	O-RING	2
10	D5000050	TOOL(MOIL)	1	33	22300020	STEP SEAL	2
10-1	D5000070	TOOL(H-WEDGE)	0	34	22200030	GAS SEAL	1
10-2	D5000080	TOOL(V-WEDGE)	0	35	D5000270	CYLINDER BUSHING	1
10-3	D5000090	TOOL(FLAT)	0	36	22401480	O-RING	1
10-4	D5000060	TOOL(CONE)	0	37	D5000210	HEAD CAP	1
10-5	D5000100	TOOL(SPADE H-WEDGE)	0	38	D7000200	GAS VALVE ASSEMBLY	1
10-6	D5000110	TOOL(SPADE V-WEDGE)	0	*39	16800010	SPRING HOSE	2
11	D9000050	PIN	2	*40	13006530	HOSE PLUG	2
12	22002510	DUST SEAL	1	-	-	-	-
13	22003760	U PACKING SEAL	1	-	D5691000	HEAD CAP SET	-
14	22000080	BUFFER SEAL	1	-	D5691100	CYLINDER SET	-
15	D5000180	CYLINDER	1	-	D5691200	TOOL HOLDER SET	-
16	D4000280	M18 SOCKET PLUG	6	-	D5691400	TENSION BOLT SET	-
17	13006010	PT SOCKET PLUG	8	-	D5691500	SPARE SEAL KIT	-
18	22402070	O-RING	3	-	DA698000	N <sub>2</sub> GAS CHARGING KIT	-
19	13008830	O-RING ADAPTER	2	MEMO			
20	13007110	UNION CAP	2				
21	22402060	O-RING	6				
22	D5000230	MAIN VALVE CASE	1				

### ■ HK45 SPARE SEAL KIT

No.	Item No.	Part No.	Part Name	Q'ty	MEMO
0	-	D5691500	SPARE SEAL KIT	1	
1	12	22002510	DUST SEAL	1	
2	13	22003760	U PACKING SEAL	1	
3	14	22000080	BUFFER SEAL	1	
4	18	22402070	O-RING	3	
5	21	22402060	O-RING	6	
6	25	22402300	O-RING	1	
7	26	22401330	O-RING	1	
8	32	22401460	O-RING	2	
9	33	22300020	STEP SEAL	2	
10	34	22200030	GAS SEAL	1	
11	36	22401480	O-RING	1	

### ■ HK45 TOOL KIT

No.	Part No.	Part Name	Q'ty			Remarks
			Side	Top	Silence	
0	-	TOOL KITS	D5691600	D5691700	D5691800	
1	16503000	TOOL BOX	1	1	1	No 2.
2	16500260	COMBI SPANNER	1	1	1	14mm
3	16502100	DOUBLE SPANNER	1	1	1	27x30mm
4	16502470	SINGLE SPANNER	-	1	1	24mm
5	16502520	SINGLE SPANNER	1	1	1	36mm
6	16501140	L WRENCH	1	1	1	5mm
7	16501160	L WRENCH	1	1	1	8mm
8	16503090	HANDLE RETAINER PIN	1	1	1	M12
9	16500700	HAMMER RING WRENCH	1	-	-	41mm

**■ HK45 N<sub>2</sub> GAS CHARGING KITS**

No	Part No	Part Name	Q'ty	MEMO
0	15620800	N <sub>2</sub> GAS CHARGING KITS	1	
1	15620900	N <sub>2</sub> GAS 3-WAY VALVE ASSEMBLY	1	
2	23392000	N <sub>2</sub> HOSE	1	
3	15620910	N <sub>2</sub> COUPLING KIT	1	
4	15620930	N <sub>2</sub> GAS CYLINDER	1	

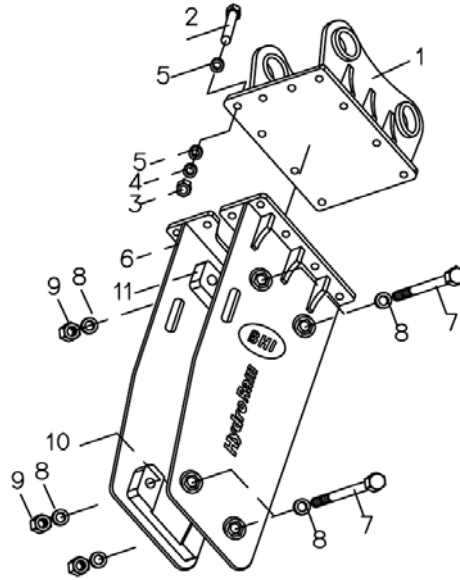
## ■HK45 BRACKET

■HK45 TOP BRACKET				■HK45S SILENCE BRACKET			
No.	Part No.	Part Name	Q'ty	No.	Part No.	Part Name	Q'ty
0	D5200000	TOP BRACKET ASSEMBLY	1	0	D5300000	SILENCE BRACKET ASSEMBLY	1
1	D4200040	REAR BRACKET	1	1	D4300090	REAR BRACKET	1
2	20007160	HEX HEAD BOLT	12	2	20007160	HEX HEAD BOLT	10
3	12001450	HEX HEAD NUT	12	3	12001450	HEX HEAD NUT	10
4	13001090	SPRING WASHER	12	4	13001090	SPRING WASHER	10
5	13000090	FLAT WASHER	24	5	13000090	FLAT WASHER	20
6	D5200170	TOP BRACKET	1	6	D5300050	SILENCE BRACKET BODY	1
7	20035550	HEX HEAD BOLT	4	7	D9300070	RUBBER CAP-S	5
8	13001140	SPRING WASHER	4	8	D5300130	COVER PLATE	1
9	12006000	CAP NUT	4	9	20211030	HEX SOCKET HEAD BOLT	6
10	D5100090	GUIDE BLOCK(A)	2	10	13000060	FLAT WASHER	6
11	D5100100	GUIDE BLOCK(B)	2	11	D5300070	DOWN CUSHION PLATE	1
-	D5693000	SET BOLT SET	-	12	D5300060	UPPER CUSHION PLATE	1
-	D5695100	DECAL KIT	-	13	D5300080	SIDE WEAR PLATE	3
MEMO				14	D5300090	LOW FRONT WEAR PLATE(1)	1
				15	D5300100	LOW FRONT WEAR PLATE(2)	1
				16	D5300110	LOW SIDE WEAR PLATE(R)	1
				17	20006810	HEX HEAD BOLT	4
				18	13000080	FLAT WASHER	4
				19	D5300210	STOPPER	2
				20	13001080	SPRING WASHER	4
				21	12001440	HEX HEAD NUT	8
				22	D5300140	LOW SIDE WEAR PLATE(L)	1
				-	D5695200	DECAL KIT	-
				MEMO			

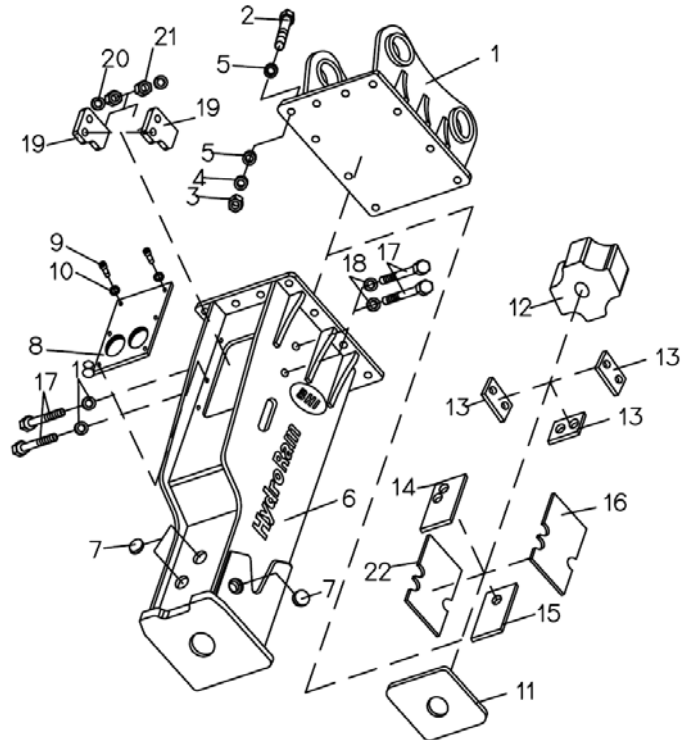
■ HK45 BRACKET

HK45

TOP BRACKET



SILENCE BRACKET



**MEMO**